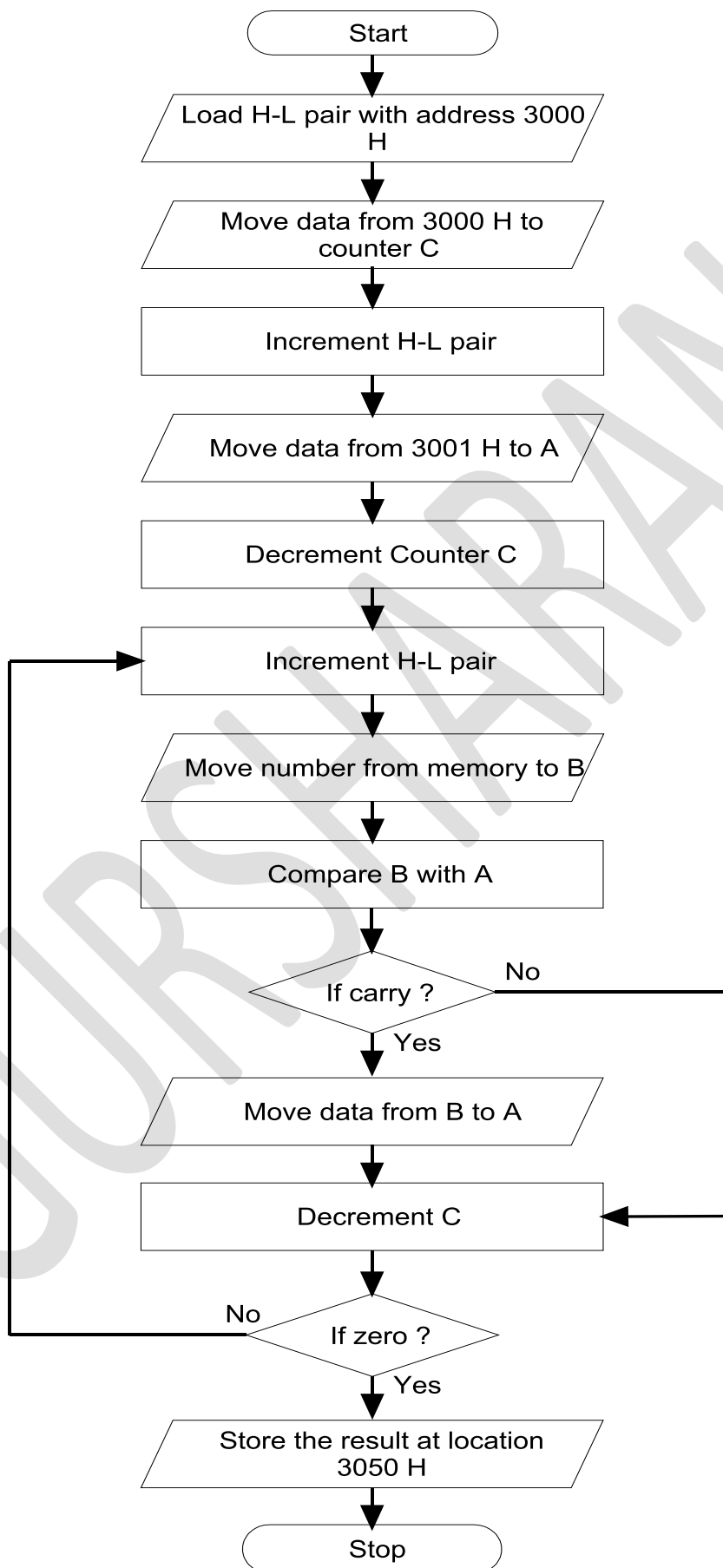


### Flow Chart to Find Largest from a Series of N Numbers



## Program to Find Largest from a Series of N Numbers

Address	Mnemonics	Operand	Opcode	Remarks
2000	LXI	H, 3000 H	21	Load H-L pair with address 3000 H
2001			00	
2002			30	
2003	MOV	C, M	4E	Move data from 3000 H to counter C
2004	INX	H	23	Increment H-L pair
2005	MOV	A, M	7E	Move data from 3001 H to A
2006	DCR	C	0D	Decrement Counter C
2007	INX	H	23	Increment H-L pair
2008	MOV	B, M	46	Move next number from memory to B
2009	CMP	B	B8	Compare B with A
200A	JNC	200E H	D2	Jump to location 200E H if no carry
200B			0E	
200C			20	
200D	MOV	A, B	78	Move data from B to A
200E	DCR	C	0D	Decrement C
200F	JNZ	2007 H	C2	Jump to location 2007 H if no zero
2010			07	
2011			20	
2012	STA	3050 H	32	Store the result at location 3050 H
2013			50	
2014			30	
2015	HLT		76	Halt

### Before Execution:

3000: 04 H  
 3001: 01 H  
 3002: 65 H  
 3003: E2 H  
 3004: 83 H

### After Execution:

3050: E2 H