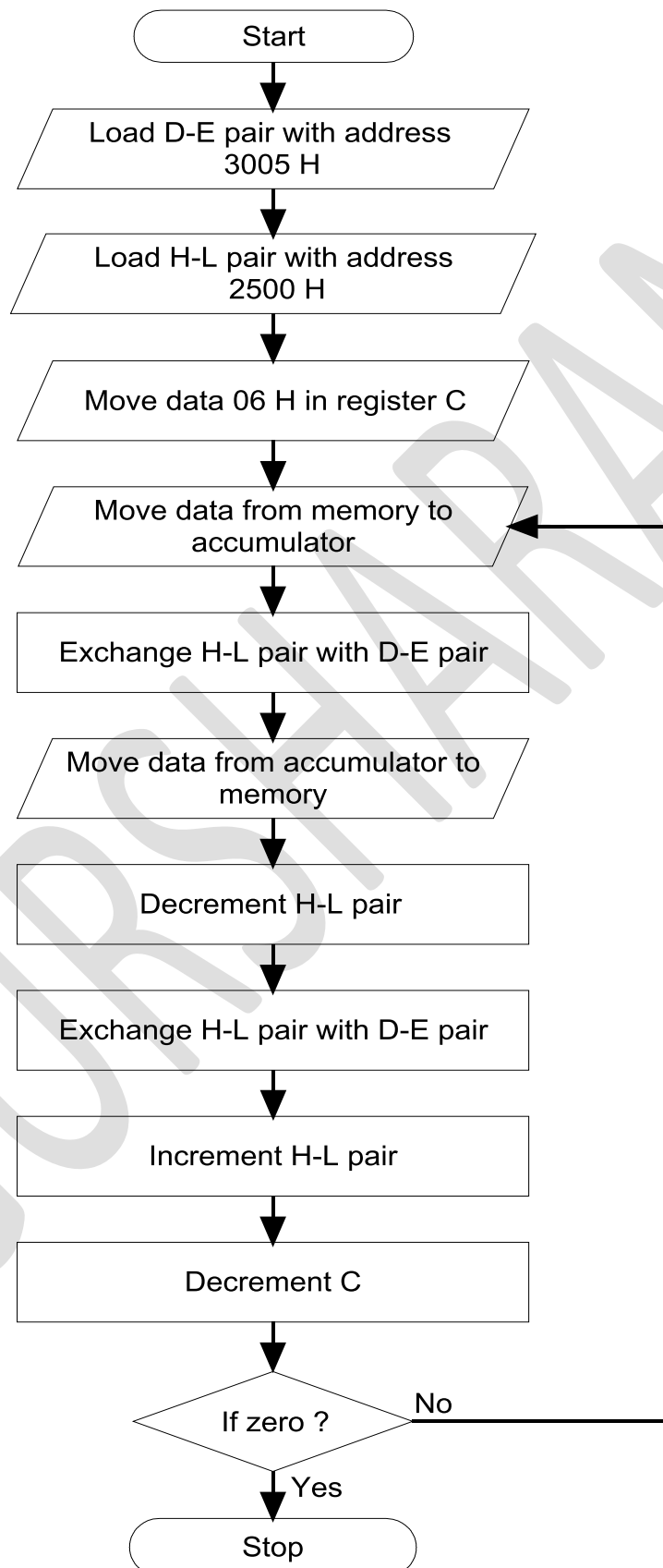


Flow Chart to Move Six 8-bit Numbers from One Place to Another in Reverse Order



Program to Move Six 8-bit Numbers from One Place to Another in Reverse Order

Address	Mnemonics	Operand	Opcode	Remarks
2000	LXI	D, 3005 H	11	Load D-E pair with address 3005 H
2001			05	
2002			30	
2003	LXI	H, 2500 H	21	Load H-L pair with address 2500 H
2004			00	
2005			25	
2006	MVI	C, 06 H	0E	Move data 06 H in register C
2007			06	
2008	MOV	A, M	7E	Move data from memory to accumulator
2009	XCHG		EB	Exchange H-L pair with D-E pair
200A	MOV	M, A	77	Move data from accumulator to memory
200B	DCX	H	2B	Decrement H-L pair
200C	XCHG		EB	Exchange H-L pair with D-E pair
200D	INX	H	23	Increment H-L pair
200E	DCR	C	0D	Decrement C
200F	JNZ	2008 H	C2	Jump to location 2008 H if no zero
2010			08	
2011			20	
2012	HLT		76	Halt

Before Execution:

2500: 00 H
 2501: 01 H
 2502: 02 H
 2503: 03 H
 2504: 04 H
 2505: 05 H

After Execution:

3000: 05 H
 3001: 04 H
 3002: 03 H
 3003: 02 H
 3004: 01 H
 3005: 00 H